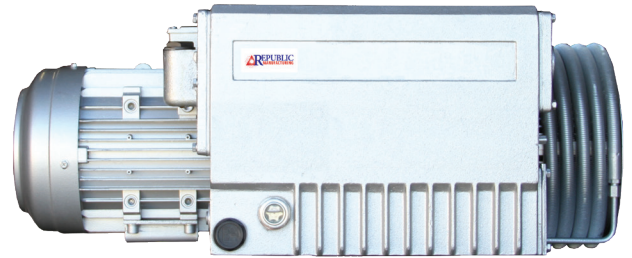


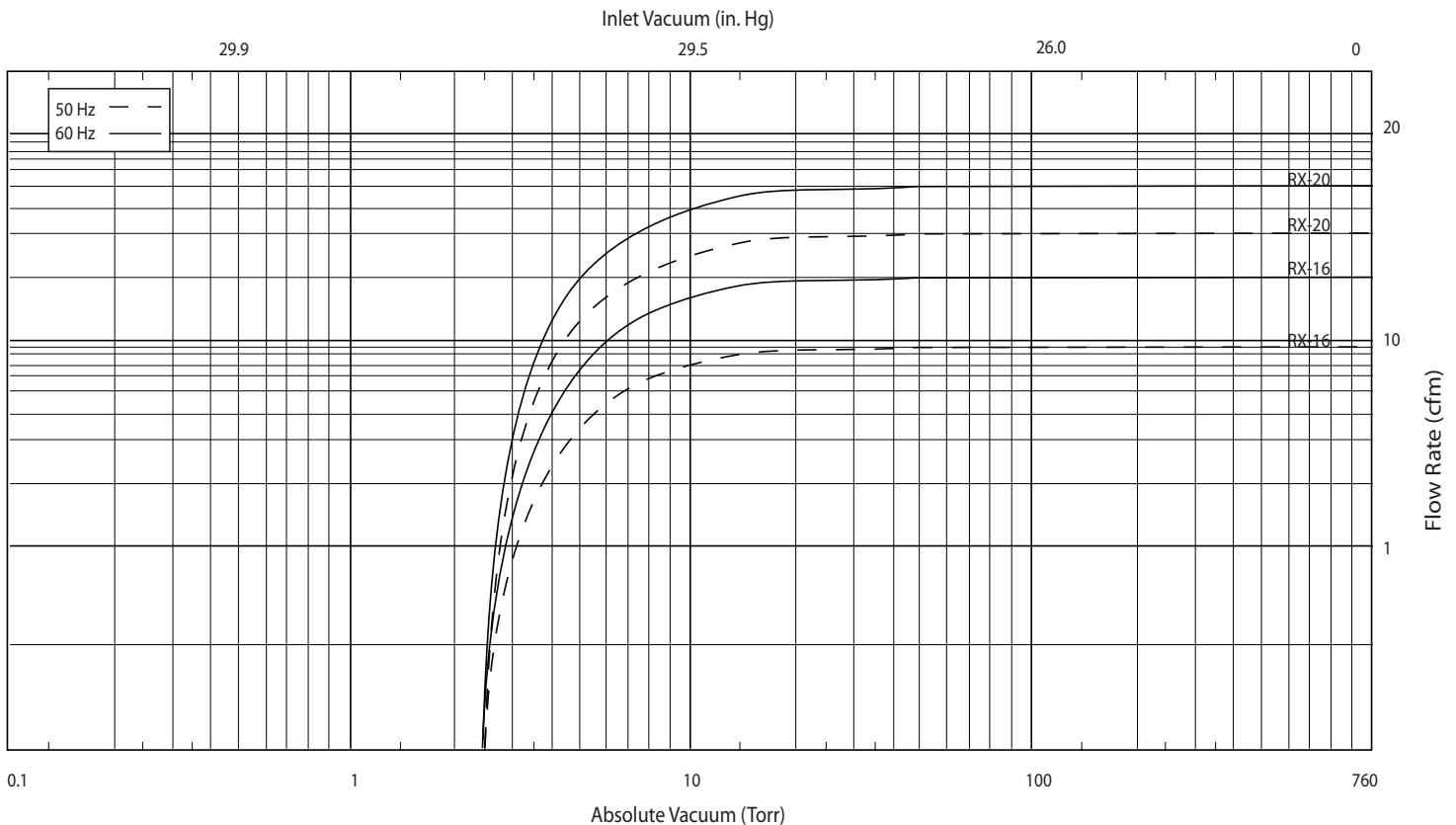
Republic offers the RX series of oil lubricated rotary vane vacuum pumps. They are single stage, air-cooled, and direct driven for continuous operation. The design is one of the most reliable and simplest vacuum pumps available. These rugged pumps are simple to install and easy to service and maintain. They are available with or without motor to meet your application needs. These vacuum pumps have a displacement range from 6 to 490 CFM (10 to 833 m<sup>3</sup>/hr) and maximum vacuum of 0.5 torr.



The RX series is used in a variety of industries such as meat packaging, food processing, thermoforming, composites, medical, laboratory, vacuum cooling, robotics, degassing, and autoclaves.

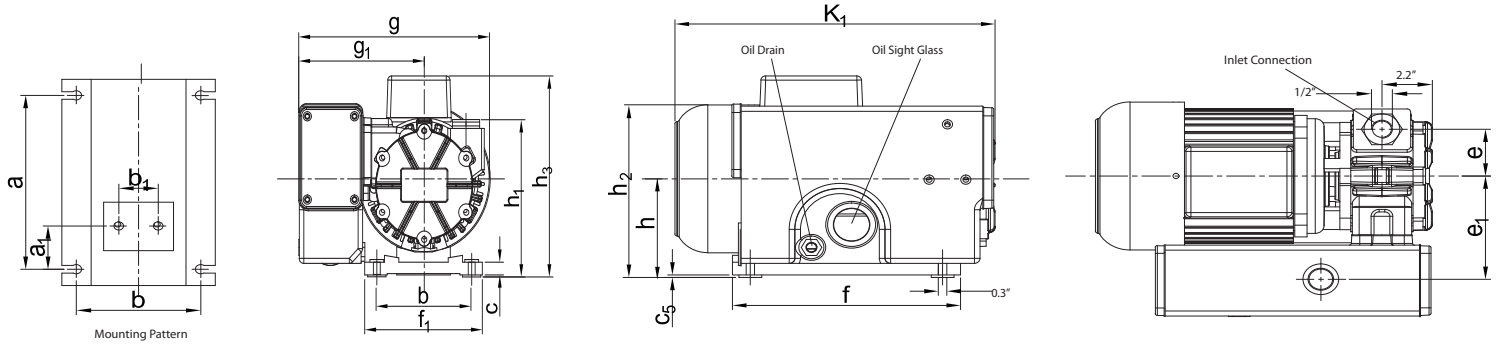
## PERFORMANCE

Model	Displacement (CFM/m <sup>3</sup> /hr)		Ultimate Vacuum Max (In. Hg./Torr/mbar)	Noise Level (dB)		Weight (lb/kg)	Motor Output		Voltage 3 Phase (V)		Speed (rpm)	
	50 Hz	60 Hz		50 Hz	60 Hz		50 Hz	60 Hz	50 Hz	60 Hz	50 Hz	60 Hz
16	9/16	11/19	29.8/2.5/3.3	61	63	53/24	0.55 kw	1.0 hp	220/380	230/460	1500	1800
20	12/21	15/25	29.8/2.5/3.3	61	63	56/25	0.90 kw	2.0 hp	220/380	230/460	1500	1800



All measurements are ±10%

## APPROXIMATE DIMENSIONS



Model	Unit	a	a1	b	b1	c	c5	e	e1	f	f1	g	g1	h	h1	h2	h3	k1	Fill Oil	Inlet Port
16	in	8.0	2.0	4.9	1.6	0.6	0.2	2.2	4.9	9.6	6.1	10.2	6.5	4.6	6.9	11.0	9.5	13.5	0.9 QT	1/2" NPT
	mm	204.5	51	125	40	15	5	55	125	244	155	260	164	116	175	279	240	343	0.8 L	
20	in	8.0	2.0	4.9	1.6	0.6	0.2	2.2	4.9	9.6	6.1	10.2	6.5	4.6	6.9	10.9	9.5	13.5	0.9 QT	1/2" NPT
	mm	204.5	51	125	40	15	5	55	125	244	155	260	164	116	175	277	240	343	0.8 L	

## Optional Accessories

- Inlet filter
- Inlet check valve
- Vacuum gauge
- Motor starter
- Control panel
- PLC