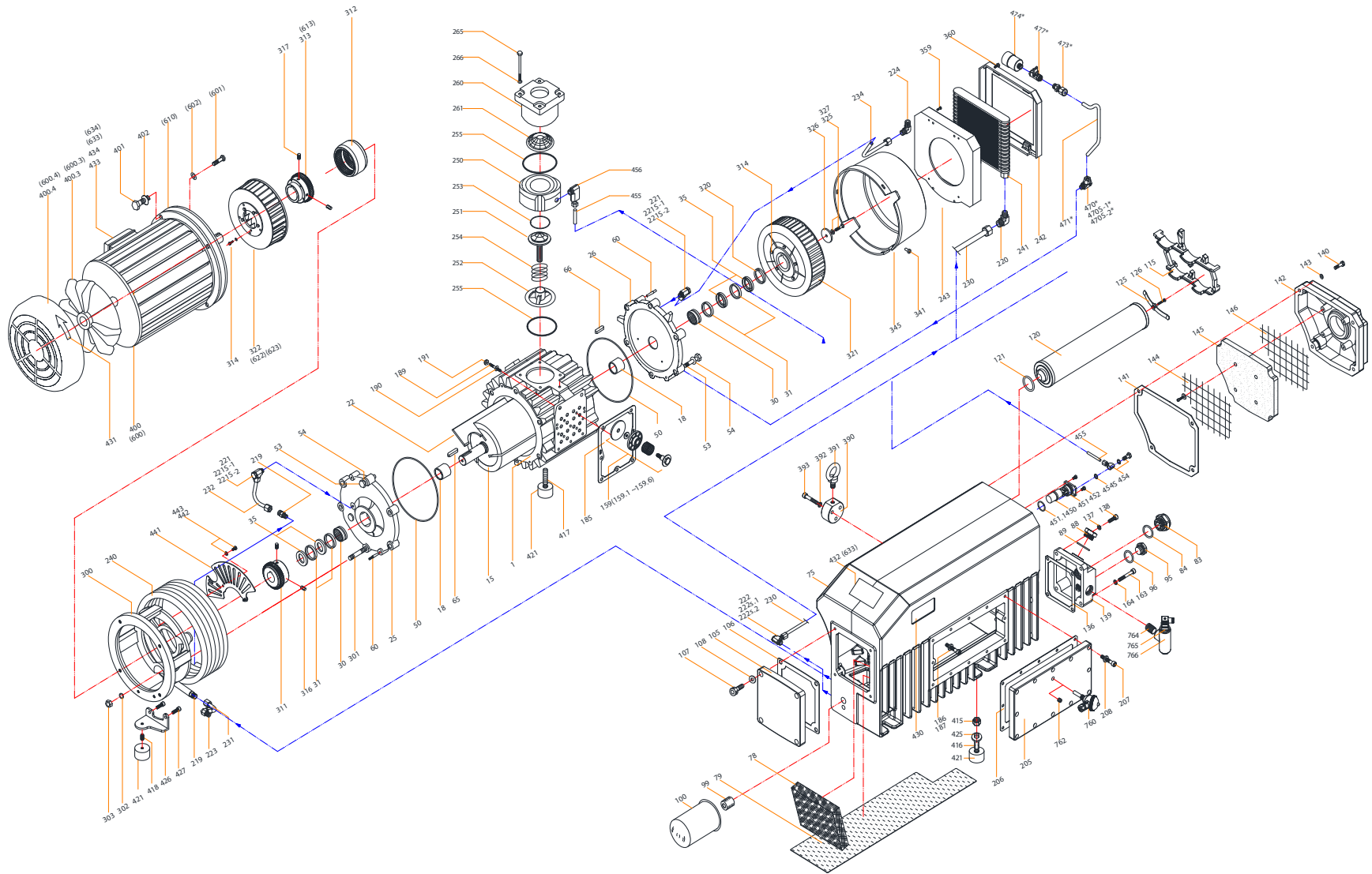


## Maintenance Kits and Parts List for the RXA-250



# RXA-250

OIL LUBRICATED VACUUM PUMP



1.800.847.0380

5131 Cash Road Dallas, TX 75247 USA

[info@republic-mfg.com](mailto:info@republic-mfg.com)

[www.republic-mfg.com](http://www.republic-mfg.com)

### PARTS LIST

Pos. No.	Part No.	Description	Qty	Notes
490	0500.490.01	Gasket Kit, RXA-250		KITS
500	0500.500.A0	Rebuild Kit, RXA-250		
501	0500.501.02	Filter Kit, RXA-250		
1	0500.001.00	Cylindere180x220/PCD210x12-M12, RXA-250	1	
15	0500.015.01	Rotore152x220, RXA-250	1	
18	0500.018.A0	Sleeve, Bearing IR e30xe35x47, RXA-175/250/302	2	Included in Rebuild Kit
18 ~19		Sleeve, Bearing	2	
22	0500.022.D0	Vane220x62x5.85, G11, RXA-250/302	3	Included in Rebuild Kit
25	0500.025.00	A-End plateID43/PCD210x12-e14, RXA-175/250	1	
26	0500.026.00	B-End plateID43/PCD210x12-e14, RXA-175/250	1	
30	0000.G04.00	Bearing RNA4906, RXA-165/175/202/250/302	2	Included in Rebuild Kit
31	0430.031.00	Sleeve(Spacer Ring)e43xe47x41, RXA-165/175/202/250/302	4	
35	0000.USD.00	Shaft seal e35xe47x6t, RXA-165/175/202/250	4	Included in Rebuild Kit
50	0000.U21.00	O-Ring, End plate e186x3.5, RXA-175/250/302	2	Included in Rebuild Kit
53	0000.ABK.00	Hexagon head screw M12x45, RXA-175/250/302	9	
54	0000.F2G.00	Spring Lock Washer	9	
60	0000.4KS.00	Taper Pin e6x30, RXA-175/250/302	4	Included in Rebuild Kit
65	0000.8GK.00	A-shaft key 8x7x35, RXA-165/175/202/250/302	1	
66	0000.8GI.00	B-Shaft key 8x7x30, RXA-175/250/302	1	
75	0500.075.B0	Oil sump, RXA-175/250/302	1	
78	0350.078.00	Steel demister 150x120x30t, RXA-175/250/302	1	
79	0500.079.00	Sheet metal baffle 162x450x1t, RXA-175/250/302	1	
83	0000.OSG.00	Oil sight glass (option) G1", RXA-16	1	
84	0000.UTB.00	Gasket, Oil sight glass	1	Included in Rebuild Kit
88	0000.OWF.A0	Plug, Oil fill G 3/4", 1/8" tap for gage, RXA-12/16/21	1	
88	0000.ORF.00	Plug, Oil fill G 3/4", Plastic type, RXA-12/16/21	1	
89	0000.URA.00	O-Ring, Oil fill plug (AL type w/ gage) P26 Teflon, RXA-12/16/21	1	Included in Rebuild Kit
90	00GA.090.00	Pressure gage 01 Bar, RXA-12/16/21	1	
95	0000.OTE.00	Plug, Oil Drain G 1/2" Plastic, RXA-16	1	
96	0000.U04.00	O-Ring, Oil drain plug e22 x T2.0, RXA-16	1	Included in Rebuild Kit
99	0060.099.00	Theaded fitting	1	
100	0500.100.00	oil filter W940/15N, RXA-165/175/202/250/302	1	Included in Rebuild Kit
105	0500.105.00	Oil sump cover plate 160x170/4-e9, RXA-175/250/302	1	
106	0500.106.00	Gasket, Oil sump cover 160x170x1t, RXA-175/250/302	1	Included in Rebuild Kit
107	0000.B8G.00	Allen bolt	4	
108	00HF.104.00	Sealing ring	4	
115	0500.115.00	Filter bracket for 4 filter elements, RXA-175/250/302	1	
120	0500.120.A0	Exhaust filter e70x 375, RXA-175/250/302	4	Included in Rebuild Kit

Pos. No.	Part No.	Description	Qty	Notes
121	0000.U08.00	O-ring, Exhaust filter e35x4.0, RXA-12/16/21	4	Included in Rebuild Kit
125	0020.125.00	Exh. Filter spring Assembly 106x12x11.5 / M4, RXA-12/16/21	4	
126	0000.E3F.00	Slotted cheese head machine screw	4	
136	0500.136.00	Gasket, Service cover 130x105x1t, RXA-165/175/202/250/302	1	Included in Rebuild Kit
137	00HF.104.00	Sealing ring	2	
138	0000.B8H.00	Allen bolt	2	
139	0500.139.B0	Service cover for level Sw & Oil Heater 130x115x57/4-e9, 3/4", 1" PS Tap, RXA-165/202/250/302	1	
139	0500.139.A0	Service cover for level Sw 130x115x45/4-e9, 3/4" PS Tap, RXA-165/202/250/302	1	
139	0500.139.00	Service cover 130x115x45/4-e9, RXA-165/175/202/250/302	1	
140	0000.B8H.00	Allen bolt	4	
141	0500.141.00	Gasket, Separator cover 240x195x1t, RXA-175/250/302	1	Included in Rebuild Kit
141	0500.141.A0	Gasket, Separator cover (new) 250x200x1t, RXA-250	1	
141	0500.141.B0	Gasket, Separator cover (new) 247.5x200.48x1t, RXA-250	1	
142	0500.142.A0	Separator cover / Exhaust Cover 240x195/4-e9, RXA-175/250/302	1	
143	00HF.104.00	Sealing ring	4	
144	0500.144.00	Perforated metal screen Wire mesh, RXA-175/250/302	1	
145	0500.145.00	Strainer, baffle Non Woven, RXA-175/250/302	1	Included in Filter Kit
146	0500.144.00	Perforated metal screen Wire mesh, RXA-175/250/302	1	
159	0500.159.00	Exhaust valve ass'y ( 159.1~ 159.6), RXA-250/302/402/500/630	4	
159-1	0500.159.01	Exhaust valve fixed bolt M8, RXA-250/302/402/500/630	4	
159-2	0500.159.02	Exhaust valve washer 32xe12.5x2t, RXA-250/302/402/500/630	4	
159-3	0500.159.03	Exhaust valve spring, RXA-250/302/402/500/630	4	
159-4	0500.159.04	Exhaust valve plate e53xe9.3x3.6, RXA-250/302/402/500/630	4	
159-4	0500.159.T4	Exhaust valve plate Teflon, RXA-250/302	4	
159-5	0500.159.05	Exhaust valve lock nut e18xM8x5.5t, RXA-250/302/402/500/630	4	
159-6	0500.159.06	Exhaust valve seat plate e54xe10x4t, RXA-250/302/402/500/630	4	
159	0500.159.A0	Exhaust valve ass'y ( 159.1~ 159.6)	4	
159-1	0350.159.A1	Exhaust valve fixed bolt, Exhaust valve washer	4	
159-3	0000.V12.00	Exhaust valve spring	4	
159-4	0350.159.04	Exhaust valve plate	4	
159-5	0350.159.A5	Exhaust valve lock nut	4	
159-6	0350.159.A6	Exhaust valve seat plate	4	Included in Rebuild Kit
163	0000.B8L.00	Allen bolt M8x50, RXA-165/175/202/250/302	2	
164	00HF.104.00	Sealing ring	2	
168	0500.168.00	O-Ring, Valve cover plate e3xl.280, RXA-175/250/302	1	
169	0500.169.00	Valve cover plate 102x110x18, RXA-175/250/302	1	
175	0000.ODA.00	Plug G1/2", RXA-250/302	1	
176	0000.F1E.00	Hexagon nut M8, RXA-16	1	



1.800.847.0380

5131 Cash Road Dallas, TX 75247 USA

info@republic-mfg.com

www.republic-mfg.com

### PARTS LIST (cont.)

Pos. No.	Part No.	Description	Qty	Notes
121	0000.U08.00	O-ring, Exhaust filterø35x14.0, RXA-12/16/21	4	Included in Rebuild Kit
125	0020.125.00	Exh. Filter spring Assembly106x12x1.5 / M4, RXA-12/16/21	4	
126	0000.E3F.00	Slotted cheese head machine screw	4	
136	0500.136.00	Gasket, Service cover130*105*11, RXA-165/175/202/250/302	1	Included in Rebuild Kit
137	00HF.104.00	Sealing ring	2	
138	0000.B8H.00	Allen bolt	2	
139	0500.139.B0	Service cover for level Sw & Oil Heater130*115*57/4-ø9, 3/4", 1" PS Tap, RXA-165/202	1	
139	0500.139.A0	Service cover for level Sw 130*115*45/4-ø9, 3/4" PS Tap, RXA-165/202/250/302	1	
139	0500.139.00	Service cover130*115*45/4-ø9, RXA-165/175/202/250/302	1	
140	0000.B8H.00	Allen bolt	4	
141	0500.141.00	Gasket, Separator cover 240*195*11, RXA-175/250/302	1	Included in Rebuild Kit
141	0500.141.A0	Gasket, Separator cover (new)250*200*11, RXA-250	1	
141	0500.141.B0	Gasket, Separator cover (new)247.5x200.48x11, RXA-250	1	
142	0500.142.A0	Separator cover / Exhaust Cover240*195/4-ø9, RXA-175/250/302	1	
143	00HF.104.00	Sealing ring	4	
144	0500.144.00	Perforated metal screen Wire mesh, RXA-175/250/302	1	
145	0500.145.00	Strainer, baffleNon Woven, RXA-175/250/302	1	Included in Filter Kit
146	0500.144.00	Perforated metal screen Wire mesh, RXA-175/250/302	1	
159	0500.159.00	Exhaust valve ass'y ( 159.1~ 159.6), RXA-250/302/402/500/630	4	
159-1	0500.159.01	Exhaust valve fixed boltM8, RXA-250/302/402/500/630	4	
159-2	0500.159.02	Exhaust valve washerø32xø12.5x2t, RXA-250/302/402/500/630	4	
159-3	0500.159.03	Exhaust valve spring, RXA-250/302/402/500/630	4	
159-4	0500.159.04	Exhaust valve plateø53xø9.3x3.6, RXA-250/302/402/500/630	4	
159-4	0500.159.T4	Exhaust valve plate Teflon, RXA-250/302	4	
159-5	0500.159.05	Exhaust valve lock nutø18xM8x5.5t, RXA-250/302/402/500/630	4	
159-6	0500.159.06	Exhaust valve seat plateø54xø10x4t, RXA-250/302/402/500/630	4	
159	0500.159.A0	Exhaust valve ass'y ( 159.1~ 159.6)	4	
159-1	0350.159.A1	Exhaust valve fixed bolt, Exhaust valve washer	4	
159-3	0000.V12.00	Exhaust valve spring	4	
159-4	0350.159.04	Exhaust valve plate	4	
159-5	0350.159.A5	Exhaust valve lock nut	4	
159-6	0350.159.A6	Exhaust valve seat plate	4	Included in Rebuild Kit
163	0000.B8L.00	Allen boltM8x50, RXA-165/175/202/250/302	2	
164	00HF.104.00	Sealing ring	2	
168	0500.168.00	O-Ring, Valve cover plate ø3xL280, RXA-175/250/302	1	
169	0500.169.00	Valve cover plate102x110x18, RXA-175/250/302	1	
175	0000.ODA.00	PlugG1/2", RXA-250/302	1	
176	0000.F1E.00	Hexagon nutM8, RXA-16	1	

Pos. No.	Part No.	Description	Qty	Notes
177	0000.D8P.00	Stud boltM8*70, RXA-175/250/302	1	
185	0500.185.00	Gasket, Cylinder 180x145x11, RXA-175/250/302	1	Included in Rebuild Kit
186	0000.B8M.00	Allen boltM8x55, RXA-175/250/302	5	
187	0000.F2E.00	Spring lock washer	5	
189	0000.B8M.00	Allen boltM8x55, RXA-175/250/302	2	
190	0000.F2E.00	Spring lock washer	2	
191	0000.F1E.00	Hexagon nutM8, RXA-16	2	
205	0500.205.A0	Oil Sump Side cover plate300x160/12-ø7, 3/8" Tap, RXA-175/250/302	1	
205	0500.205.00	Side cover plate300x160/12-ø7, RXA-175/250/302	1	
206	0500.206.00	Gasket, Side cover plate 300x160x11, RXA-175/250/302	1	Included in Rebuild Kit
207	0000.B6F.00	Hex. Socket Head Cap Screw	12	
208	00HF.101.00	Sealing ring	12	
219	00HF.009.00	Straight hydraulic fittingBMC 1/4"xø10, RXA-175/250/302	1	
220	00HF.004.00	BLM hydraulic fittingBLM 3/8"xø15, RXA-165/202/250/302	2	
221	00HF.014.00	BSLM hydraulic fitting	2	
221S-1	00HF.108.00	Sealing Ring for 221	2	
221S-2	00HF.109.00	Sealing Ring for 221	2	
222	00HF.017.00	BSLM Hydraulic fittingBSLM 18 x ø 15, RXA-165/202/250/302/630	1	
222S	00HF.113.00	Sealing Ring	2	
223	00HF.001.00	Elbow Hydraulic fitting (OLD)BLM 1/4" x ø 10, RXA-175/250/302	1	
224	00HF.003.00	Elbow hydraulic fittingBLM 3/8"xø10, RXA-250/302	1	
230	0500.230.A0	Oil tube (A-1)ø15, RXA-250/302	1	
231	0500.231.A0	Oil tube (B-1)ø10, RXA-250/302	1	
231	0500.231.A0	Oil tube (B-1)ø10, RXA-250/302	1	
232	0500.232.00	Oil tube (B-2)ø10, RXA-250/302	1	
232	0500.232.A0	Oil tube (B-2)ø10, RXA-250	1	
234	0500.234.00	Oil tube (B-3)ø10, RXA-250/302	1	
234	0500.234.00	Oil tube (B-3)ø10, RXA-250/302	1	
237	00HF.008.00	BLT Hydraulic fittingBLT ø10/ø10/ø15, RXA-165/202/250	1	
240	0500.240.00	Cooling spiraleø316x5P, with fittings, RXA-175/250/302	1	
241	0500.241.00	Radiator, RXA-165/202/250/302	1	
242	0500.242.00	Cover( front), radiator, RXA-250/302	1	
243	0500.243.00	Cover( rear), radiator, RXA-250/302	1	
250	0500.250.00	Inlet flange,Lower housingø115*48, RXA-175/250/302	1	
251	0500.251.00	Check valve plateø9.5/ø78*55, plastic, RXA-175/250/302	1	
252	0500.252.A0	Check valve guideø10/ø82*25, plastic, RXA-175/250/302	1	
253	0000.U12.00	O-Ring, Inlet part	1	Included in Rebuild Kit
254	0500.254.A0	Check valve springD25*Ni9*1.54*d0.75, RXA-165/175/202/250/302	1	



1.800.847.0380

5131 Cash Road Dallas, TX 75247 USA

info@republic-mfg.com

www.republic-mfg.com

### PARTS LIST (cont.)

Pos. No.	Part No.	Description	Qty	Notes
255	0000.U14.00	O-Ring, In-let part ø87x3 RXA-165/175/202/250/302	2	Included in Rebuild Kit
260	0500.260.A0	Inlet flange, Upper housing, HorizontalG 1-1/2", Horizontal Inlet, RXA-175/250	1	
260	0500.260.00	Inlet flange, Upper housing, VerticalG 2", Vertical Inlet, RXA-175/250/302	1	
261	0500.261.B0	Inlet screen (conical)M30 D70/d80xh50, Plastic Rim, RXA-165/175/202/250/302	1	Included in Rebuild Kit
261	0500.261.00	Inlet screen (conical)mw0.5 Do20/d74.5xh40, RXA-250	1	
265	0000.B8Z.00	Allen boltM8x120, RXA-175/250/302	4	
265	0000.B8Z.00	Allen boltM8x120, RXA-175/250/302	4	
266	0000.F2E.00	Spring lock washer	4	
300	0500.300.C0	Motor mounting bracket For IEC 132M, B5, P.c.d 210/3xd14, RXA-250	1	
301	0000.DBQ.00	StudM12x75, RXA-175/250/302	3	
302	0000.F2G.00	Spring Lock Washer	3	
303	0000.F1G.00	Hex nut	3	
310	0500.310.00	Coupling set (311 ~313)Coupling set, RXA-250/302	1	
311	0500.FCP.00	Coupling Half, Pump SideFlange type, F140x ø30, RXA-165/202/250/302	1	
312	0500.FCB.00	Connection Bolt with rubber bootBolt + washer + Rubber + Nut, RXA-165/202/250/302	6	Included in Rebuild Kit
312.3	0500.312.03	Rubber BootRubber, RXA-250/302	6	
313	0500.FCM.A0	Coupling Half, IEC Motor SideFlange type that can fit w/ fan,IEC #132(ø38), RXA-250/3	1	
314	0000.A6E.00	Hexagon head screw	5	
310 (new)	0500.310.A0	Coupling set (311 ~313), RXA-250/302	1	
311	0500.TCP.00	Coupling Half, Pump SideKTR, Teeth type, ø30mm, RXA-165/175/202/250/302	1	
312	0500.TCS.00	Coupling, SleeveKTR, Nylon, Sleeve, RXA-165/175/202/250/302	1	
313	0500.TCM.A0	Coupling Half, Motor Side (IEC)Teeth(Bowex) type, ø38mm, RXA-175/202/250/302	1	
316	0000.C8C.00	Set screw (pump side)	2	
317	0000.C8C.00	Set screw (pump side)	2	
320	0500.320.00	Spacer for Coupling Half, Pump sideø40xø31x71, RXA-165/175/202/250/302	1	
321	0500.321.B0	Pump shaft end fan, RXA-250/302	1	
321	0500.321.C0	Pump shaft end fanPlastic, ø230x80, RXA-250/302	1	
322	0500.322.A0	Motor shaft end fan for IEC MotorAL Casting ø200x90/ø38, RXA-250/302	1	
322	0500.322.B0	Motor shaft end fan for IEC Motor, RXA-250/302	1	
322	0500.322.C0	Motor shaft end fan for IEC/ NEMA MotorPlastic only, ø230x60, RXA-250/302	1	
322	0500.322.D0	Motor shaft end fan for IEC/ NEMA MotorPlastic only, ø178 x 52, RXA-175/250/302	1	
325	0000.F2C.00	Washer, Spring lockM5, RXA-250/302	1	
326	0500.326.00	Washer, plain, RXA-175/250/302	1	
327	0500.A5F.00	Hexagon boltM5X20, RXA-250/302	1	
341	0000.A5E.00	Hexagon head screwM5x15, RXA-175/250/302	3	
345	0500.345.A0	Fan Cover, RXA-250/302	1	
359	0000.B6F.00	Hex. Socket Head Cap Screw	4	
360	0000.B6M.00	Allen BoltM6x55, RXA-250/302	4	

Pos. No.	Part No.	Description	Qty	Notes
390	0500.390.00	Adapter for eye bolt30x140/H50, RXA-175/250/302	1	
391	0000.F5G.00	Eye boltM12, RXA-175/250/302	1	
392	0000.F2G.00	Spring Lock Washer	1	
393	0000.ABP.00	Hexagon head screwM12x70, RXA-175/250/302	1	
400		Motor (IEC)-50Hz	1	
400		Motor (IEC)-60Hz	1	
400.3	0500.400.03	Motor Fan (IEC), RXA-250/302	1	
400.4	0500.400.04	Motor Fan Cover (IEC), RXA-250/302	1	
401	0000.ABI.00	Hexagon head screwM12x35, RXA-175/250/302	4	
402	0000.F2G.00	Spring Lock Washer	4	
415	0000.F1F.00	Hex nutM10, RXA-165/175/202/250/302	1	
416	0000.CAH.00	Slotted set screwM10x35, RXA-175/250/302	1	
417	0000.CAG.00	Slotted set screwM10x20, RXA-250/302	2	
418	0000.CAE.00	Slotted set screwM10x15, RXA-250/302	1	
421	0000.F8F.00	Rubber foote50x30/M10, RXA-165/175/202/250/302	3	
423	0000.F1F.00	Hex nutM10, RXA-165/175/202/250/302	1	
425	0500.425.00	Washer10xø20x2t, RXA-165/175/202/250/302	1	
426	0600.426.00	Bracket for Rubber foot, RXA-175/250/302	1	
427	0000.B8G.00	Allen bolt	2	
430	1111.001.00	Name plateAL, 85 x 38 x 10.4, RXA-12/16/21	1	
431	1111.003.00	Directional arrow label 15x40, RXA-16	1	
432	1111.006.00	Label, maintenance	1	
449	0320.449.00	Float Assembly		
449	0320.449.A0	Float Assembly		
450	0060.450.00	Float - With Rubber Pad, Pin, Orifice & O-ring, RXA-16	1	
451	0500.451.A0	Nozzle AssemblyM8, with O-ring, Horizontal type, RXA-165/202/250	1	
451.1	0000.U06.00	O-Ring, Check valve plateø24 x T2.0, RXA-16	1	Included in Rebuild Kit
452	0000.E11.00	Bolt	2	
454	00HF.015.00	BSLM hydraulic fitting	1	
454S	00HF.105.00	Sealing Ringø10xø14x11, RXA-12/16/21	2	
455	0500.455.00	Oil Return tube ø6x420, Seamless tube, RXA-175/250/302	1	
456	00HF.006.00	Elbow hydraulic fitting BLS 1/8"xø6, RXA-175/250/302	1	
470*	00HF.014.00	BSLM hydraulic fitting	1	
470S-1	00HF.108.00	Sealing Ring for 221	1	
470S-2	00HF.109.00	Sealing Ring for 221	1	
471*	0500.471.A0	Oil tube(C)ø10, RXA-175/250/302	1	
473*	00HF.023.00	Fitting	1	
474*	0500.474.00	Gas ballastG3/8"x ø39 x 65, RXA-165/175/202/250/302	1	



1.800.847.0380

5131 Cash Road Dallas, TX 75247 USA

info@republic-mfg.com

www.republic-mfg.com

**PARTS LIST (cont.)**

Pos. No.	Part No.	Description	Qty	Notes
474*-1	0500.474.01	Foam Filter Element, Gas Ballast , RXA-165/202/250/302	1	
477*	0000.SCA.00	Ball Valve	1	
480*	0500.480.00	Gas Ballast KitPos # 470 thru 474, RXA-175/250/302	1	
491	0500.491.00	Filter Kit, RXA-250/302	1	
492	0500.492.A0	Rebuild Kit, RXA-250/302	1	
541	0500.541.00	Float Valve Assembly Kit450-456, RXA-175/250/302		
550	0500.550.00	Inlet Check Valve Kit (250 -266), RXA-175/250/302		
560	0500.560.00	Aqua version kitHeater, level switch and Service cover, RXA-250/302		
570	0500.570.B2	Coupling kit with fanNEMA 215/213TC, with PN50622C, RXA-175/250/302	1	
570	0500.570.B1	Coupling kit with fanNEMA 215/213TC, with PN50622B, RXA-175/250/302	1	
570	0500.570.A2	Coupling kit with fanIEC 132, With PN50622C, RXA-250/302	1	
570	0500.570.A1	Coupling kit with fanIEC 132, With PN50622B, RXA-250/302	1	
600		Motor(NEMA)	1	
600.3	0500.600.03	Motor Fan(NEMA), RXA-250/302	1	
600.4	0500.600.04	Motor Fan Cover(NEMA), RXA-250/302	1	
601	0000.BP0.00	Allen Bolt (NEMA)1/2", RXA-175/250	4	
602	0500.602.00	Spring Lock Washer, RXA-250		
610	0500.610.00	Motor Mounting Flange adapter (NEMA)for NEMA 215TC, RXA-250	1	
612B	0500.612.B0	Coupling set (311 + 613B), NEMACoupling set, Flange type that can fit w/fan, RXA-175	1	
312	0500.FCB.00	Connection Bolt with rubber bootBolt + washer + Rubber + Nut, RXA-165/202/250/302	6	Included in Rebuild Kit
613B	0500.FCM.C0	Coupling half, Motor side(NEMA)Flange type that can fit w/ fan F140x ø 1.375", RXA-17	1	
612C (new)	0500.612.C0	Coupling set (311+312+613) NEMA, RXA-175/250/302	1	
311	0500.TCP.00	Coupling Half, Pump SideKTR, Teeth type, ø30mm, RXA-165/175/202/250/302	1	
312	0500.TCS.00	Coupling, SleeveKTR, Nylon, Sleeve, RXA-165/175/202/250/302	1	
613	0500.TCM.C0	Coupling, Motor side(NEMA)Teeth type, ø34.925mm 213TC, RXA-175/250/302	1	
622	0500.622.C0	Motor shaft end fan for NEMA MotorPlastic, ø171x51, RXA-175/250/302	1	
622	0500.622.B0	Motor shaft end fan for NEMA MotorPlastic, ø230x60, RXA-175/250/302	1	
623	0500.623.00	Collar for fan(# 622), for NEMA motorSteel, ø 1.375", RXA-175/250/302	1	
760	0500.760.00	Oil Temperature SwitchBimetal, Brass, 3/8" connection, 125°C, RXA-165/202/250/302	1	
765	0060.765.A0	Oil Level Switch	1	
770	0500.770.00	Heater with control1.5Kw, PT1" 470x300, RXA-165/175/202/250/302	1	
771	0500.771.00	Water Cooler kitBar plate type cooler, hoses, adapter, fittings and Valve, RXA-165/202/	1	
790	0500.790.A0	Water Separator, Automatic drain valveLS400-2-SA, 982mm x ø 490mm, SUS 304, 2",	1	
790	0500.790.00	Water Separator, Automatic drainLSA400-2, 1510mm x ø 490mm, SUS 304, 2", RXA-	1	
792	1200.792.00	Three Way Valve	1	
800	00IF.004.00	Inlet Air FilterG 2", Canister( IF230), RXA-165/175/202/250/302	1	
810	0500.810.00	Base, RXA-250/302		
900	0500.900.B1	Pump Modulemodule for NM type, RXA-250	1	
900	0500.900.B0	Pump Modulemodule, RXA-250	1	



1.800.847.0380

5131 Cash Road Dallas, TX 75247 USA

info@republic-mfg.com

www.republic-mfg.com