

Maintenance Kits and Parts List for the RXA-63

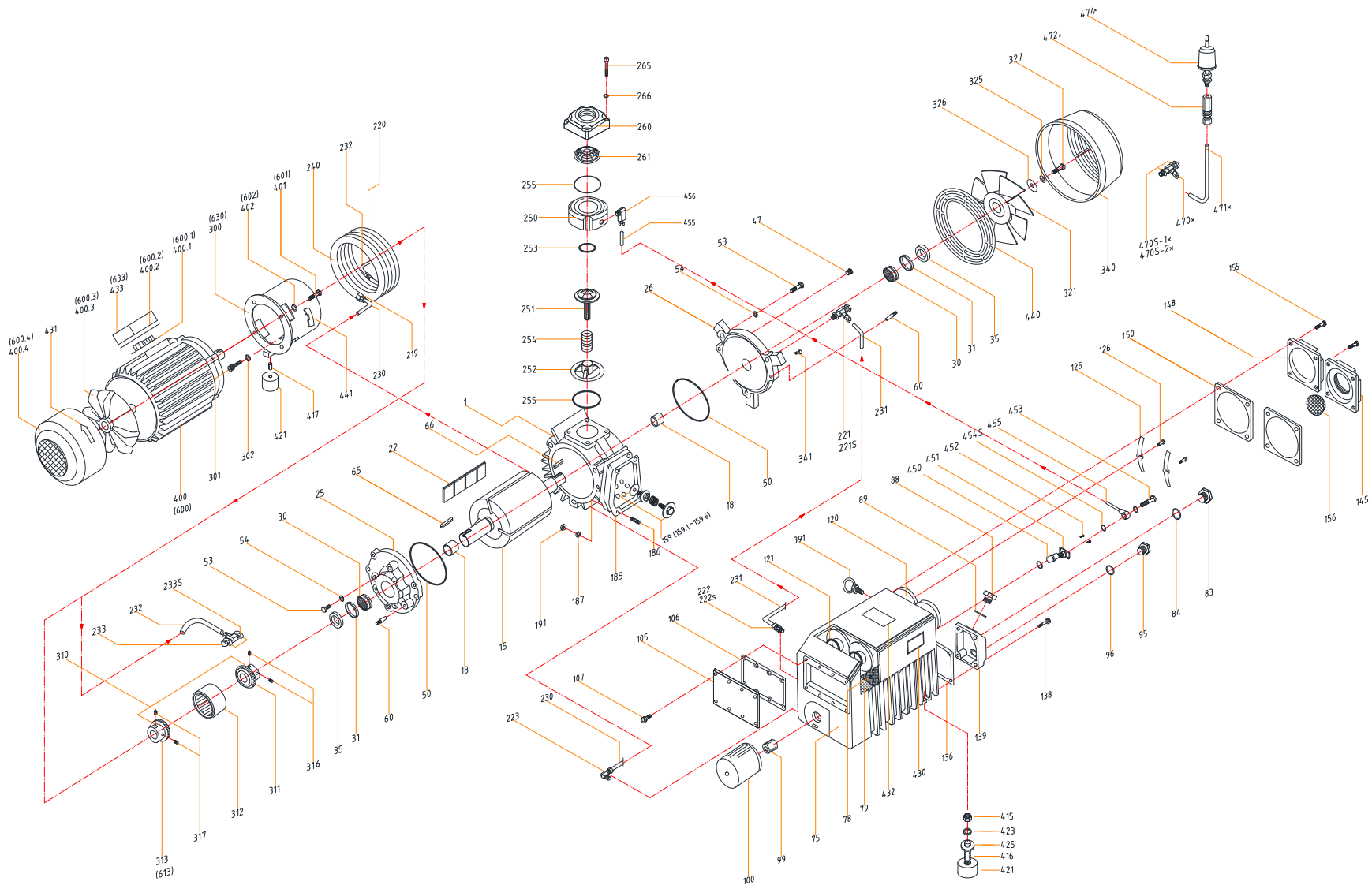


RXA-63/RXA-63-SP
OIL LUBRICATED VACUUM PUMP

Part Numbers cover all revisions and motor configuration of RXA-63

RXA-63/RXA-63-SP

OIL LUBRICATED VACUUM PUMP



1.800.847.0380
5131 Cash Road Dallas, TX 75247 USA

info@republic-mfg.com
www.republic-mfg.com

PARTS LIST

Pos. No.	Part No.	Description	Qty	Notes
490	0200.490.00	Gasket Kit, RXA-100/63	1	
500	0120.500.00	Rebuild Kit, RXA-63	1	KITS
501	0200.501.00	Filter Kit, 53 -55L, RXA-100/63	1	
1	0120.001.A0	Cylinder#125x100/PCD147/6-M8, #8 Add. RXA-63	1	
15	0120.015.00	Rotor#105x100, RXA-63	1	
18	0200.018.00	Sleeve, Bearing IRa25x#30x38.5, RXA-100/63	2	Included in Rebuild Kit
22	0120.022.00	Vane100x40x3.8, G11, RXA-63	3	Included in Rebuild Kit
25	0200.025.A0	A-end plateID#40/PCD145/3xd9.5, #4 -> #8, RXA-100/63	1	
26	0200.026.A0	B-end plateID#40/PCD145/3xd9.5, #4 -> #8, RXA-100/63	1	
30	0000.G03.00	BearingRNA 4905, RXA-100/63	2	Included in Rebuild Kit
31	0200.031.00	Sleeve(Spacer Ring), RXA-100/63	2	
35	0000.USC.00	Shaft seal#30x#42x6t, RXA-100/63	2	Included in Rebuild Kit
47	0000.OAA.00	PlugG1/8", RXA-100/25/40/63	1	
50	0000.U18.00	O-Ring, End plate #128x3.0, RXA-100/63	2	Included in Rebuild Kit
53	0000.A8H.00	Hexagon BoltM8x30, RXA-100/25/40/63	6	
54	0000.F2E.00	Spring lock washer	6	
60	00000.SK0.00	Taper pin#8 x L25 x M5, RXA-100/25/40/63	4	Included in Rebuild Kit
63	0000.0TB.00	Plug (For N Only)G1/8", RXA-12/16/21	1	
65	0000.8GH.00	A-Shaft key, motor side#8x7x25 (8x7x30 old type: pn 20065), RXA-100/63	1	
66	0000.8FG.00	B-Shaft key, fan side7x7x20, RXA-100/63	1	
75	0200.075.00	Oil Sump, RXA-100/63	1	
78	0200.078.00	Steel demister170x90x25t, RXA-100/63	1	
79	0200.079.00	Sheet metal baffle147x147x1t, RXA-100/63	1	
83	0000.OSF.00	Oil sight glass G 3/4", RXA-16	1	
84	0000.UTA.00	Gasket, Oil sight glass#26 Teflon, RXA-12/16/21	1	Included in Rebuild Kit
88	0000.OVF.A0	Plug, Oil fillG 3/4", 1/8" tap for gage, RXA-12/16/21	1	
88	0000.ORF.00	Plug, Oil fillG 3/4", Plastic type, RXA-12/16/21	1	
89	0000.U04.00	O-Ring, Oil drain plug #22 x T2.0, RXA-16	1	Included in Rebuild Kit
90	00GA.090.00	Pressure gage#1 Bar, RXA-12/16/21	1	
95	0000.OTE.00	Plug, Oil Drain G 1/2" Plastic, RXA-16	1	
96	0000.U04.00	O-Ring, Oil drain plug #22 x T2.0, RXA-16	1	Included in Rebuild Kit
99	0060.099.00	Theaded fitting	1	
100	0060.100.00	Oil filterAW52, RXA-100/25/40/63	1	Included in Rebuild Kit
105	0200.105.00	Oil sump cover plate154x97x15/8-#6.5, RXA-100/63	1	
106	0200.106.00	Gasket, Oil sump cover 154x97x1t, RXA-100/63	1	Included in Rebuild Kit
107	0000.86F.00	Hex. Socket Head Cap Screw	8	
108	00HF.101.00	Sealing ring	8	
120	0060.120.A0	Exhaust filter#35x#70x250, RXA-100/40/63	2	Included in Rebuild Kit
121	0000.U08.00	O-ring, Exhaust filter#35x#4.0, RXA-12/16/21	2	Included in Rebuild Kit
125	0020.125.00	Evh. Filter spring Assembly106x12x1.5 / M4, RXA-12/16/21	2	
126	0000.E3F.00	Slotted cheese head machine screw	2	
136	0060.136.00	Gasket, Service cover 78x102x1t, RXA-100/25/40/63	1	Included in Rebuild Kit

Pos. No.	Part No.	Description	Qty	Notes
137	00HF.101.00	Sealing ring	4	
138	0000.86F.00	Hex. Socket Head Cap Screw	4	
139	0060.139.B0	Service cover for level sw & Heater78x102x60.3/4" PS Tap, 1" PS Tap, RXA-100/25/40/63	1	
139	0060.139.A0	Service cover for level sw78x102x60.3/4" PS Tap, RXA-100/25/40/63	1	
139	0060.139.00	Service cover 78x102x30, RXA-100/25/40/63	1	
145	0060.145.00	Exhaust cover (Threaded flange)Al, 88x88 / 4#6.5, PF 11/4", RXA-12/16/21	1	
148	0200.148.00	Exhaust cover (Blocked)88x88/4-#6.5, RXA-100/63	1	
150	0020.150.00	Gasket, Exhaust cover 87x87x1t, RXA-12/16/21	2	Included in Rebuild Kit
155	0000.86F.00	Hex. Socket Head Cap Screw	8	
156	0060.156.00	Outlet screen#65x1t, RXA-12/16/21	1	
159	0020.159.00	Exhaust valve ass'y 159.1~ 159.6 M6x#35xH20, RXA-165/202/63	2	
159.1	0020.159.01	Exhaust valve fixed bolt	2	
159.2	0020.159.02	Exhaust valve washer	2	
159.3	0000.V09.00	Exhaust valve spring 1.8x#21.6xN#4x1.5, RXA-12/16/21	2	
159.4	0020.159.04	Exhaust valve plate#8x#34.7x#8, RXA-12/16/21	2	
159.5	0020.159.05	Exhaust valve lock nutM6x#12.9x#4, RXA-12/16/21	2	
159.6	0020.159.06	Exhaust valve seat plate#8.2x#36x1.9, RXA-12/16/21	2	Included in Rebuild Kit
185	0200.185.A0	Gasket, Cylinder132x102/4-#9.5, RXA-100/25/40/63	1	Included in Rebuild Kit
186	0000.D8I.00	StudM8x40, RXA-16	4	
187	0000.F2E.00	Spring lock washer	4	
191	0000F1E.00	Hexagon nutM8, RXA-100/63	4	
221	00HF.016.00	B5LM hydraulic fittingB5LM1/8"x#8, RXA-100/25/40/63	1	
2215	00HF.105.00	Sealing Ring#10x#14x1t, RXA-12/16/21	2	
222	00HF.013.00	Straight hydraulic fittingBMCI/8"x#8, RXA-100/25/40/63	1	
223	00HF.005.00	Elbow hydraulic fittingBLM1/8"x#8, RXA-100/25/40/63	1	
231	0200.231.00	Oil tube (B)#8x#460, RXA-100/63	1	
233	00HF.016.00	B5LM hydraulic fittingB5LM1/8"x#8, RXA-100/25/40/63	1	
2335	00HF.105.00	Sealing Ring#10x#14x1t, RXA-12/16/21	2	
250	0060.250.A0	Inlet flange, lower housing#90x35, RXA-100/25/40/63	1	
251	0060.251.A0	Check valve plate#8/e57x39, RXA-100/25/40/63	1	
252	0060.252.A0	Check valve guide#8.5x#62xH17, RXA-100/25/40/63	1	
253	0000.U09.00	O-Ring, Check valve plate#44x3.0, RXA-100/165/25/40/63	1	Included in Rebuild Kit
254	0060.254.A0	Check valve spring#50x#6x#98x#1.0, RXA-100/25/40/63	1	
255	0000.U12.00	O-Ring, Inlet part	2	Included in Rebuild Kit
260	0060.260.A0	Inlet flange, upper housing, HorizontalG1", Horizontal Inlet, RXA-100/25/40/63	1	
260	0060.260.00	Inlet flange, upper housing, VerticalG11/4", Vertical Inlet, RXA-100/25/40/63	1	
261	0060.261.CO	Inlet screenM30.D50/d59x#15.5, Plastic Rim (w/o Ribs), RXA-100/40/63	1	Included in Rebuild Kit
261	0060.261.B0	Inlet screenM30.D50/d59x#15.5, Plastic Rim, RXA-100/25/40/63	1	
261	0060.261.00	Inlet screenm#0.5,Do20:D60xH15, RXA-100/25/40/63	1	
265	0000.860.00	Hex. Socket Head Cap Screw M6x#65, RXA-100/25/40/63	4	
266	0000.F20.00	Spring lock washer	4	
270*	0000.0TB.00	Plug (For N Only)G1/8", RXA-12/16/21	1	



1.800.847.0380

5131 Cash Road Dallas, TX 75247 USA

info@republic-mfg.com

www.republic-mfg.com

PARTS LIST (cont.)

Pos. No.	Part No.	Description	Qty	Notes
275*	0020.275.00	Oil return valve (For N Only)M8x1.0x30, RXA-12/16/21	1	
275S*	00HF.103.00	Sealing ring (For N Only) for 275**ø8.5xø14x1t, RXA-12/16/21	1	
300	0200.300.00	Motor mounting bracket (IEC)IEC 100L, ø165xø110/PCD1304-ø9.5, RXA-100/63	1	
300	0200.300.B5	Motor mounting bracket (IEC)IEC 100L, B5 Flange, RXA-100/63	1	
301	0000.88G.00	Allen bolt	3	
302	0000.F2E.00	Spring lock washer	3	
310A (new)	0200.310.A0	Coupling Set (311A ~313A), RXA-100/63	1	
311A	0200.TCP.00	Coupling, pump sideKTR, Teeth type, ø25mm, RXA-100/63	1	
312B	0200.TCS.00	Coupling, SleevePloyamid with carbon fiber share,natural rubber, RXA-100/25/40/63	1	Included in Rebuild Kit
313A	0200.TCM.00	Coupling, Motor sideKTR,Teeth type, ø 24mm,L50mm, RXA-100/63	1	
313C	0200.TCM.A0	Coupling, Motor sideKTR,Teeth type, ø 28mm,L50mm, RXA-100/63	1	
316	0000.C8C.00	Set screw (pump side)	2	
317	0000.C8C.00	Set screw (pump side)	2	
321	0200.321.A0	Fan, Pump shaft end ø206xø21.8, RXA-100/63	1	
321	0200.321.B0	Fan, Pump shaft end ø xø21.8, for Aqua version, RXA-100/63	1	
325	0000.F3D.00	Washer, Spring LockS/W.M6, RXA-100/25/40/63	1	
326	0060.326.00	Washer, Plainø6xø30x2t, RXA-100/25/40/63	1	
327	0000.A6E.00	Hexagon head screw	1	
328	0200.328.00	Fan Kit, (# 321, 325, 326, 327, 66)Kit, RXA-100/63	1	
340	0200.340.00	Fan hoodø220x92, RXA-100/63	1	
341	0000.E1K.00	Hexagon head screwM5x12, RXA-100/25/40/63	3	
391	0000.F5F.00	Eye boltM10, RXA-100/40/63	1	
400		Motor (IEC)-50Hz	1	
400		Motor (IEC)-60Hz	1	
400.3	0200.400.03	Motor Fan (IEC), RXA-100/63	1	
400.4	0200.400.04	Motor Fan Cover (IEC), RXA-100/63	1	
401	0000.A8H.00	Hexagon BoltM8x30, RXA-100/25/40/63	4	
402	0000.F2E.00	Spring lock washer	4	
415	0000F1E.00	Hexagon nutM8, RXA-100/63	1	
416	0000C8H.00	Slotted set screwM8x30, RXA-100/63	1	
417	0000.C8F.00	Slotted set screw	2	
421	0000.F8E.00	Rubber footø30x20/M8, RXA-12/16/21	3	
423	0000.F2E.00	Spring lock washer	1	
425	0060.425.00	Washerø8.5xø20x1.5t, RXA-100/25/40/63	1	
430	1111.001.00	Name plateAL, 85 x 38 x t0.4, RXA-12/16/21	1	
431	1111.003.00	Directional arrow label 15x40, RXA-16	1	
440	0200.440.00	Protection cover for the fanPlastic grill, RXA-100/63	1	
441	0060.441.A0	Protection coverPlastic Clip, for NEMA, RXA-100/202/25/40/63	1	
441	0060.441.00	Protection coverPlastic Clip, for IEC, RXA-100/202/25/40/63	1	
449	0060.449.00	Float AssemblyM8, RXA-100/25/40/63	1	
450	0060.450.00	Float - With Rubber Pad, Pin, Orifice & O-ring, RXA-16	1	

Pos. No.	Part No.	Description	Qty	Notes
451	0060.451.00	Nozzle AssemblyM8, with O-ring, RXA-100/25/40/63	1	
451.1	0000.U06.00	O-Ring, Check valve plateø24 x T2.0, RXA-16	1	Included in Rebuild Kit
452	0000.E1I.00	Bolt	2	
453	0060.453.00	Bolt for Banjo Fitting, oil returnM8 x p1.0x20, RXA-100/25/40/63	1	
454S	00HF.102.00	Sealing ring (For L /NM) for 285**ø8.5xø13x1t, RXA-12/16/21	2	
455	0060.455.00	Oil Return tube with Banjo fittingø4x30S, copper tube, RXA-100/25/40/63	1	
456	00HF.024.00	Elbow hydraulic fitting BLM 1/8"xø4, Br, RXA-100/25/40/63	1	
470*	00HF.015.00	B5LM hydraulic fitting	1	
470S*-1	00HF.105.00	Sealing Ringø10xø14x1t, RXA-12/16/21	1	
470S*-2	00HF.105.00	Sealing Ringø10xø14x1t, RXA-12/16/21	1	
471*	0200.471.00	Oil tube(C)ø6x220, RXA-100/63	1	
472*	0060.472.00	Gas Ballast (OLD), RXA-100/63	1	
472*	0060.472.A0	Gas Ballast (new) from 2009, RXA-100/25/40/63	1	
474*	0060.474.00	Air filter (OLD)G1/8", RXA-100/63	1	
474*	0060.474.A0	Air filter with fitting (new) from 2009G1/8", RXA-100/25/40/63	1	
480*	0060.480.00	Gas Ballast KitPos # 470 thru 474, RXA-100/25/40/63	1	
510	0130.510.00	Conversion kit, L type15 mbar, RXA-63	1	
520	0130.520.00	Conversion kit, N Typeø0.5 mbar (+ GB Kit), RXA-63	1	
530	0130.530.00	Conversion kit, NM Type2 mbar (+ GB kit), RXA-63	1	
541	0200.541.00	Float Valve Assembly Kitø450°456, RXA-100/63		
550	0060.550.00	Inlet Check Valve Kit (250 ~266)(250 ~266), RXA-25/40/63	1	
600		Motor (NEMA)	1	
600.3	0130.600.03	Motor Fan(NEMA), RXA-63	1	
600.4	0130.600.04	Motor Fan Cover(NEMA), RXA-63	1	
601	0130.601.00	Hexagon head screw(NEMA), RXA-63	4	
602	0130.603.00	Spring lock washer(NEMA), RXA-63	4	
612A	0200.612.A0	Coupling set (311A + 312B+ 613A), NEMAKTR, Teeth type, NEMA, RXA-100/63	1	
613A	0200.TCM.80	Coupling, Motor side(NEMA)KTR, Teeth type, 182/4TC, ø 1.125", RXA-100/63	1	
630	0200.630.00	Motor Mounting Bracket(NEMA)For NEMA Motor, RXA-100/63	1	
765	0060.765.80	Oil Level Switchwith housing, RXA-100/25/40/63	1	
770	00HK.050.00	Heater with control1.0kw, PT11° 420x250, RXA-100/63	1	
800	00IF.002.00	Inlet Air FilterG 1-1/4" S, Canister (IF 130), RXA-25/40/63	1	
800	00IF.003.00	Inlet Air FilterG 1-1/4" L, Canister(IF 170), RXA-100/63	1	
810	0200.810.00	Base, RXA-100/63		
900	0120.900.00	Pump Modulemodule, RXA-63	1	



1.800.847.0380

5131 Cash Road Dallas, TX 75247 USA

info@republic-mfg.com

www.republic-mfg.com